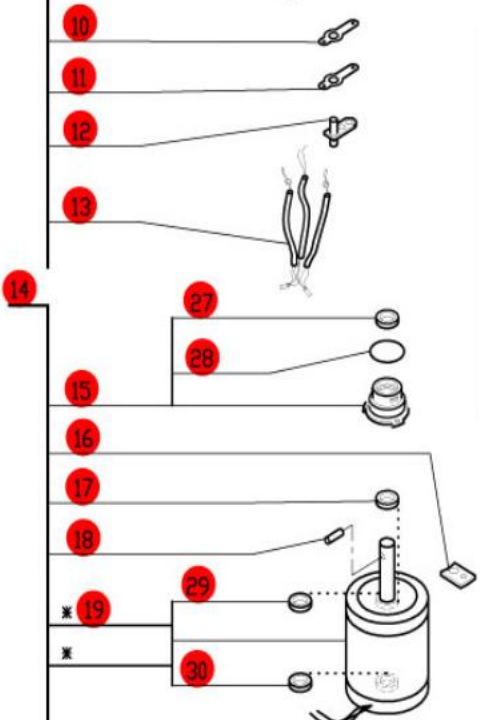
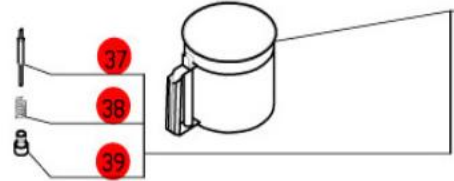
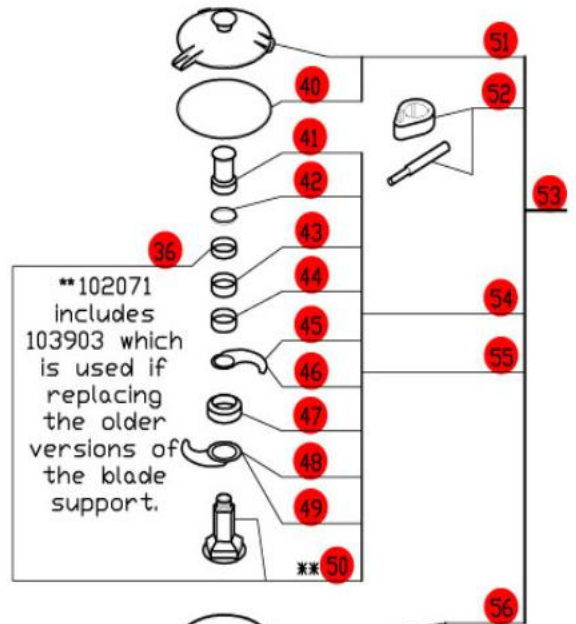
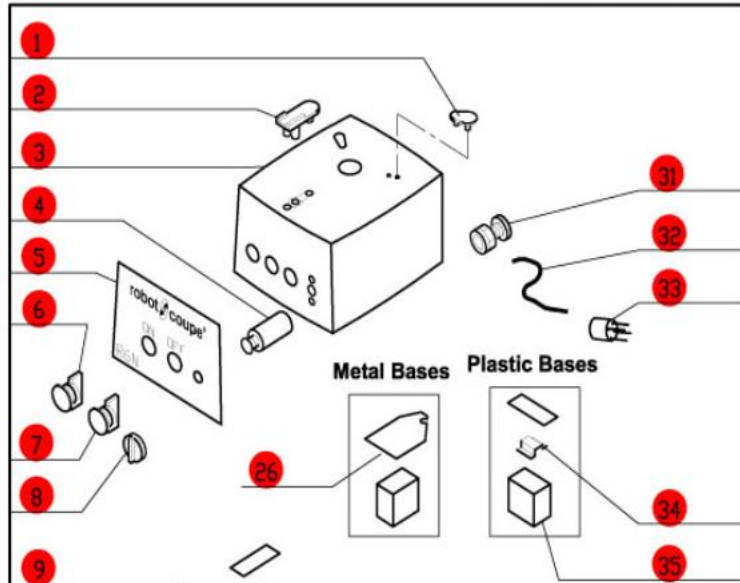


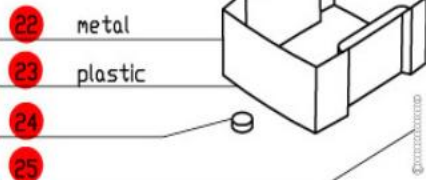
R6B Series A

Series A, Serial Numbers R6NxxxxxxA
 2- Speed, 208-240 Volt, 3 Phase, 60Hz., 1 HP.
 Low Speed-850 RPM, 7.6 Amps
 High Speed-1725 RPM, 2.8 Amps
 Use C Designated Plates.



* RA604D old style motor is no longer available.
 Order S193379, 29620, R611, 117770, and four BX658 screws.

Do not order baffle if you have a plastic base.



Click on Red Dot
OR
Call us for help
800-465-6060

ACCESSORIES

